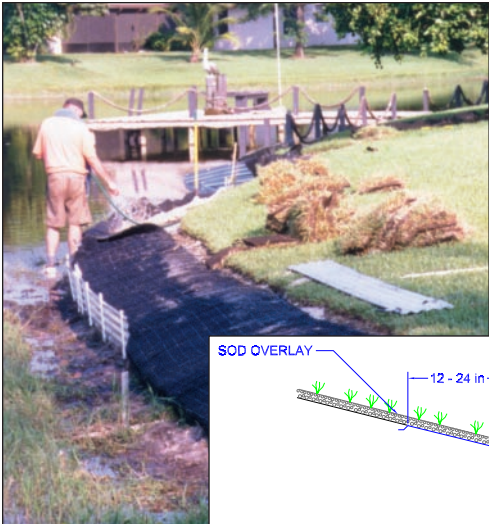


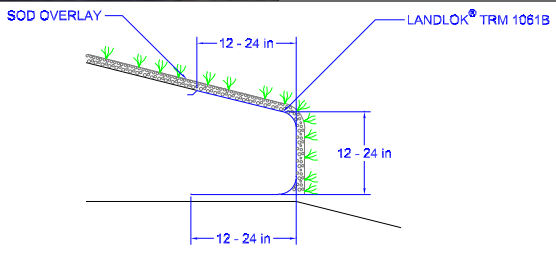


# Lake shoreline erosion problem solved with Landlok® TRM



The Lakes of Shorebrook homeowners association faced losing up to a foot a year in shoreline due to erosion caused by wind-induced wave action and rain erosion (piping, or soil loss under the vegetative cover). Because local ordinance standards in the West Palm Beach, Florida neighborhood prohibited the placement of hard armor for protecting shorelines, a soft armor solution was needed.

Local contractor Richard Simpson, along with Synthetic Industries and area distributor ACF Environmental, studied ways to permanently protect the leading edge of the shoreline. The result was the use of Landlok® TRM 1061B in a wrapped-face application. This



unique turf reinforcement mat has a lightweight nonwoven geotextile stitched to the back to aid in the reduction of sediment loss due to piping. The TRM was placed along the shoreline, filled with sand, wrapped and stapled to the bank and covered



### PROJECT FILE

<b>Project Name</b>	Lakes of Shorebrook
<b>Location</b>	West Palm Beach, FL
<b>Product</b>	Landlok TRM 1061B
<b>Application</b>	Lake Shoreline Protection
<b>Owner</b>	Lakes of Shorebrook
<b>Date</b>	September 1999
<b>Contractor</b>	Richard Simpson
<b>Distributor</b>	ACF Environmental

with sod. Once in place, Landlok TRM 1061B created a permanent reinforced backing for the sod durable enough that it withstood the forces of a hurricane that season.

This solution was ideal because the amount of installation damage was minimal and the cost was a fraction of typical hard armor alternatives like cribwall, sheet piling, rock riprap and concrete revetment.



Landlok TRM 1061B was placed, filled with sand, wrapped as illustrated in the detail and sodded. The result is a natural looking residential shoreline.



6025 Lee Highway, Suite 435 • Chattanooga, TN 37421  
 (423) 899-0444 • (800) FIX-SOIL  
 FAX (423) 899-7619 • www.fixsoil.com